

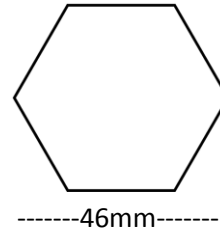
SR5 Commercial Super Racing:

Frame:

Material: 46mm Commercial aluminium

Frame style: Middle cross-bars with spring loaded roof mast(s) (1,2,3)

Framework design/shape: 46mm hexagonal section



NEW!!! Now with Internal Tube Ribs for extra strength!!!

Features:

- Carbon fibre reinforced plastic (CFRP) joints with quick pull-pin release system
- Galvanised steel feet
- Height adjustment – 5 different height positions, position 1 and 5 margin is 30 cm



Measurements:

- Edge of canopy (Valance) highest: 200 cm / lowest: 170 cm
- Top roof mast (Apex) highest: 333 cm / lowest: 303

Top:

Material: 380g Polyester with PVC coating, PU (polyurethane) coating for full FLAME RETARDANCY

Features:

- Corner velcros
- Side velcros
- Seal taped seams
- Guyrope corner anchoring loops
- PVC Coating
- Screw down balls

Reinforcement: Double layer material reinforcement in corners and valances

Sides:

Material: 380g Polyester with PVC coating, PU (polyurethan) coating for full FLAME RETARDANCY

Printing:

Suitable for full flood digital printing on canopy and sidewalls

Included accessories:

- Tie down 7mm/220mm Pegs + guyropes
- Polyester (PVC coated) storage bag with solid base and wheels for frame+top
- Polyester (PVC coated) storage bag for sidewalls

Warranty:

- 12 months guarantee
- Spare parts full availability
- We DO NOT guarantee storm damage



1. Roof structure – middle crossbars, spring loaded roof mast (Apex)



2. Internal Tube Ribs for extra strength!!!



3. Roof structure



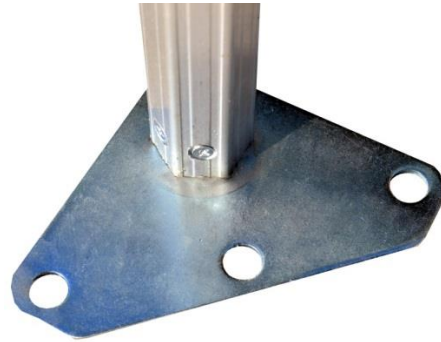
4. 4.5m x 3m Shelter



5. 3m x 3m Shelter



6. Canopy corner anchoring loop



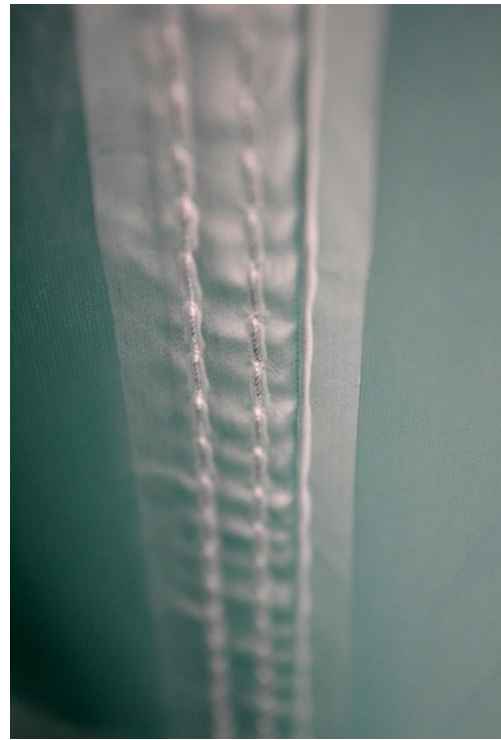
7. Steel feet



8. Easy pull ring release system joints



9. Height adjustment



10. Seal taped seams



11. Canopy corner screw down ball



12. Canopy corner screw down ball



13. Roof mast (Apex)



14. Canopy double layer reinforcement and velcros



15. Tie down Pegs + guyropes



16. Storage bag with solid base and wheels



17. Wheeled storage bag for frame + top



18. Storage bag for sidewalls